



Installation Guide

V6.0

Table of Contents

IGES/Works Installation Guide 4

Pre-Installation Checklist for IGES/Works V 6.0 4

System Prerequisites for Installing/Running IGES/Works 4

Checking for Netscape Version 5

Proper System Privileges 5

Data You Need to Collect Before Installing IGES/Works 5

Installing from CD-ROM 6

Getting Your IGES/Works Authorization Code 6

Installing the License Server 6

Customizing IGES/Works 7

Log Files 9

IGES/Works Main Installation Instructions 9

IGES/Works License Installation 14

Part One: Create License File 17

Part Two: License Server Installation 20

Appendix A. IGES/Works X Application Resource File 22

Resource File 23

Appendix B. Mount Commands 24

Appendix C. License Agreement 26

Appendix D. Combining Licenses 33

Unix 33

NT 34

IGES/Works Installation Guide

Version 6.0 (October, 2001)

Using the Pre-Installation Checklist, you can verify that you have the correct system configuration and have collected all the required information before starting the installation. Installation is different depending on whether you are installing on UNIX or on an NT system. The Pre-Installation Checklist and both installation procedures are described here.

Pre-Installation Checklist for IGES/Works V 6.0

Read this before installing IGES/Works. It will save you time during installation. It will help you prepare by checking to see if you have the correct system prerequisites and information you need before performing the installation. This will ensure that the install goes smoothly.

Installation Procedure for IGES/Works 6.0 includes the following:

- Disk Space Requirements
- Installing From CD-ROM
- Installation
- Verifying the Installation Process
- IGES/Works Directory Structure

System Prerequisites for Installing/Running IGES/Works

The minimum disk space needed to install IGES/Works 6.0 are shown below.

| | |
|---------|--------------|
| SGI | 63 Megabytes |
| Solaris | 65 Megabytes |
| RS6000 | 61 Megabytes |
| HP | 55 Megabytes |
| NT | 57 Megabytes |

Checking for Netscape Version

To determine if you have Netscape loaded on your UNIX system, either check with your system administrator or enter the following command. It should return the directory location where Netscape is installed.

```
which netscape
```

To check to see what version you have on UNIX platforms, enter:

```
netscape -version
```

On Windows NT systems, look for Netscape under the Start - Programs menu.

You may use another compatible browser besides Netscape.

Proper System Privileges

When setting up the IGES/Works licensing on UNIX or Windows, you need to be logged in as root or the administrator.

On UNIX, ITI recommends that you be root when installing the product. If you are installing IGES/Works in your home account, you do not need to be root. However, if you want to install the license server so that on a reboot the necessary license daemons are started automatically, you will need to be root while running the license server installation. On Windows, you should be logged in as someone in the administrator group or at least have administrator privileges when installing the product so that the necessary services can be installed and set up.

Data You Need to Collect Before Installing IGES/Works

During the installation process, you will be prompted to supply various pieces of information. The following sections describe the data that you should collect in advance to simplify the actual installation.

You may want to include the name 'ITI' or 'IGESWORKS' in the directory path where you install IGES/Works. The install script will create a version sub-directory with all relevant files for that version below it.

Installing from CD-ROM

To install the IGES/Works software from CD-ROM, follow the steps below.

1. Mount the CD-ROM (see Appendix B. Mount Commands especially if your platform does not have the automount capability).
2. Start the installation script which will do the following:
 - extract/copy the appropriate files for IGES/Works from the CD-ROM
 - run the installation script (setup.bat on NT or install.csh on UNIX) to complete the installation and license the software.

Getting Your IGES/Works Authorization Code

When running the first part of the license installation script, you will have the opportunity to e-mail a pre-license file with all the necessary information for TranscenData to send you your license file. This file will activate the IGES/Works software.

| | |
|---|--|
| Your customer number (from the packing slip) | |
| Server machine information given to you by the install_license script (step one). (Gather this information while running the script or find the results of the "lmutil lmhostid" command sent with the software.) | |
| Hostname or machine name of server | |
| Port number | |
| Location where you plan to install FlexLM | |

E-mail the file generated by part one of the license_install script to **works_supp@transcendata.com** or call IGES/Works Customer Support at 1-888-783-9199 with the above information. ITI will provide you with your IGESWorks_License.dat file.

| | |
|---|--|
| IGES/Works code received from TranscenData. | |
| FlexLM code(s) received from TranscenData. | |

Installing the License Server

You must be logged in as root on the system you wish to set up as your FlexLM license server. For a Nodelocked license, you need to run this while on the machine which the license is going to be locked to.

To simplify the IGES/Works licensing setup, TranscenData recommends that you complete the following form with the appropriate information. You will be prompted for it when running the license installation. Once you have all the data listed below, start the IGES/Works license installation.

1. cd to the CDROM cd /cdrom
 2. run the installation or setup
- NT: ./license_install.csh
- UNIX: ./license_setup.bat

(See Appendix B. Mount Commands especially if your platform does not have the automount capability.)

Note

If you are installing a license server on Windows NT, make sure the directory location does not contain any spaces in its name.

| | |
|--|--|
| What is the hostname of the system that you are going to use as the license server? Remember to be on the specific server when running the second step of the license_install script. | |
| Where will you be installing the FlexLM license server and utility files? Or what is the location where you have installed FlexLM for other current Transcendata products? | |
| Where did you install you install IGES/Works | |
| Location where you have the license file IGESworks_License.dat sent to you by Transcendata. | |

Customizing IGES/Works

Customizing IGES/Works to suit your requirements.

1. Make sure that `/installation_directory/v6.0/bin/plat_<platform>` is in your search path by modifying the UNIX environmental PATH variable in your `.cshrc` file (`~/cshrc`), profile or login.
2. Copy the configuration file (`.igesworks`) to your home directory.

```
cp
/installation_directory/v6.0/bin/plat_<platform>/igesworks ~/.
```

Remember when you modify this file, it is important to remove the `/*` before and the `*/` after the statement in order for your changes to be used. Also if you modified this file in a previous version of IGES/Works, be sure to merge the changes into the new file. Also make sure that the UIDPATH is set correctly in the `.igesworks` configuration file

Note

***DO copy** the latest configuration file to have access to IGES/Works V 6.0 configuration file variables.*

You can modify any parameters in the configuration file. For a description of the parameters in this file, read the .igesworks file, or see the sections regarding configuration in "Working with Files" (Chapter 3) of the *IGES/Works User's Manual*.

3. You may also wish to set the X fonts and colors for IGES/Works by using the resource file (Igesworks) found in the bin directory.
4. The default temporary directory for IGES/Works will either be /usr/tmp or /var/tmp. If you start getting FILE I/O or other memory related errors, change the temporary directory location to a disk partition that has more available space. Set the necessary environment variable by entering the following (as an example) at the UNIX prompt:

```
setenv PDELIB_TMP /users/tmp
```

You can also have this variable set automatically every time you log in by placing the preceding line in your .cshrc file or in the IGES/Works configuration file .igesworks.

Note

If you are installing IGES/Works for access by many users, you will need to communicate the customizing process to each individual user.

UIDPATH Environment Variable

Once the installation is completed, all UNIX platforms must set up the resource file environment variable.

For IGES/Works to run, you must have the resource file variable, UIDPATH, set to the IGES/Works resource file. This can be done in one of the following ways:

1. In the .cshrc file (~/.cshrc) or at the UNIX command line by entering:

```
setenv UIDPATH
/users/igesworks/v6.0/bin/plat_<platform>/igesworks.uid
```

2. In the IGES/Works configuration file .igesworks to be set at startup time.

Edit */installation_directory/bin/.igesworks*. Find the second occurrence of UIDPATH. After making sure the path is correct, uncomment it or activate it. To activate a line, remove the /* above and the */ below the ENV line.

Before

```
/*
ENV UIDPATH = "/users/igesworks/v6.0/
bin/plat_<platform>/igesworks.uid";
*/
```

After

```
ENV UIDPATH = "/users/igesworks/6.0/
bin/plat_<platform>/igesworks.uid";
```

Notice that the fully qualified path, including the filename, is shown. Do not overwrite the existing setting of the UIDPATH variable. UIDPATH is not IGES/Works specific, but rather a standard Motif variable. To include multiple path settings, use a colon-separated notation. For example,

```
setenv UIDPATH /users/apl/lib/appl.uid:/users/igesworks/6.0/
bin/plat_<platform>/igesworks.uid
```

Note

If you have an older version of IGES/Works, you may need to reset your UIDPATH so that the older igesworks.uid files are not referenced. Use 'printenv' to check the current value of

UIDPATH. Use 'setenv' to reset the value of UIDPATH so that it references only the new igesworks.uid file.

Log Files

If at any time you want to see exactly what happened during the installation or if you run into a problem and want to see what the problem was, you can check the log files:

- installation.log
- features_installed.log

If you need to email technical support because of an installation problem, attach these two files to your email.

IGES/Works Main Installation Instructions

Once the software is copied from the CDROM, the installation script will guide you through the steps necessary to complete the installation.

You can install IGES/Works on NT and on UNIX machines. The prompts in this document are taken from an NT installation. However, the process is the same except where noted.

Step 1

Login as Root on UNIX or administrator on NT— this is important because you will need to be able to create directories and run the license server installation.

Step 2

Insert the CD into the proper drive. (For platforms without the automount capability, see Appendix B. Mount Commands).

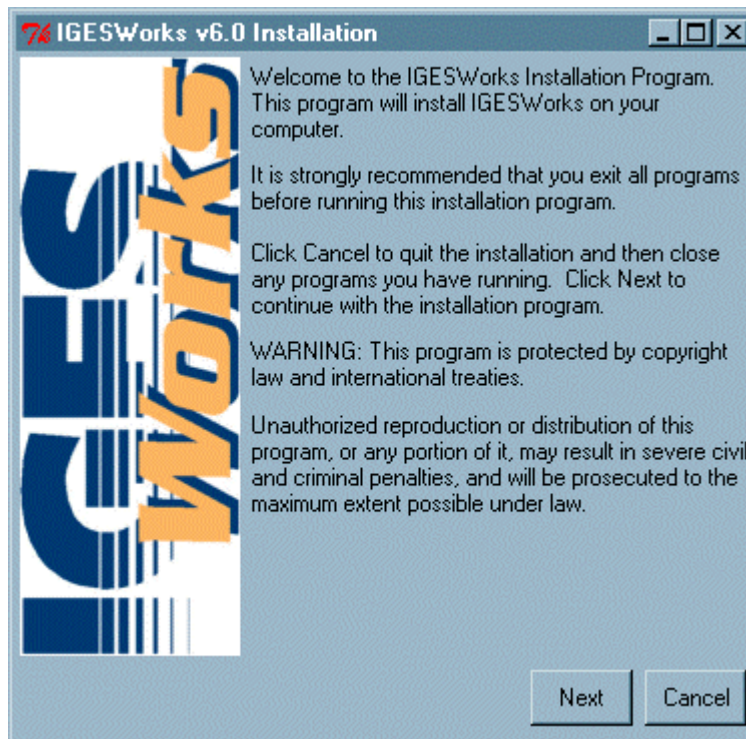
Step 3

The installation should start automatically. If not you can go to the CDROM directory and run the setup file. (On NT: Start-Windows Explorer-CDROM Drive - double-click the file setup.bat. On UNIX: /cdrom/.../install.csh.

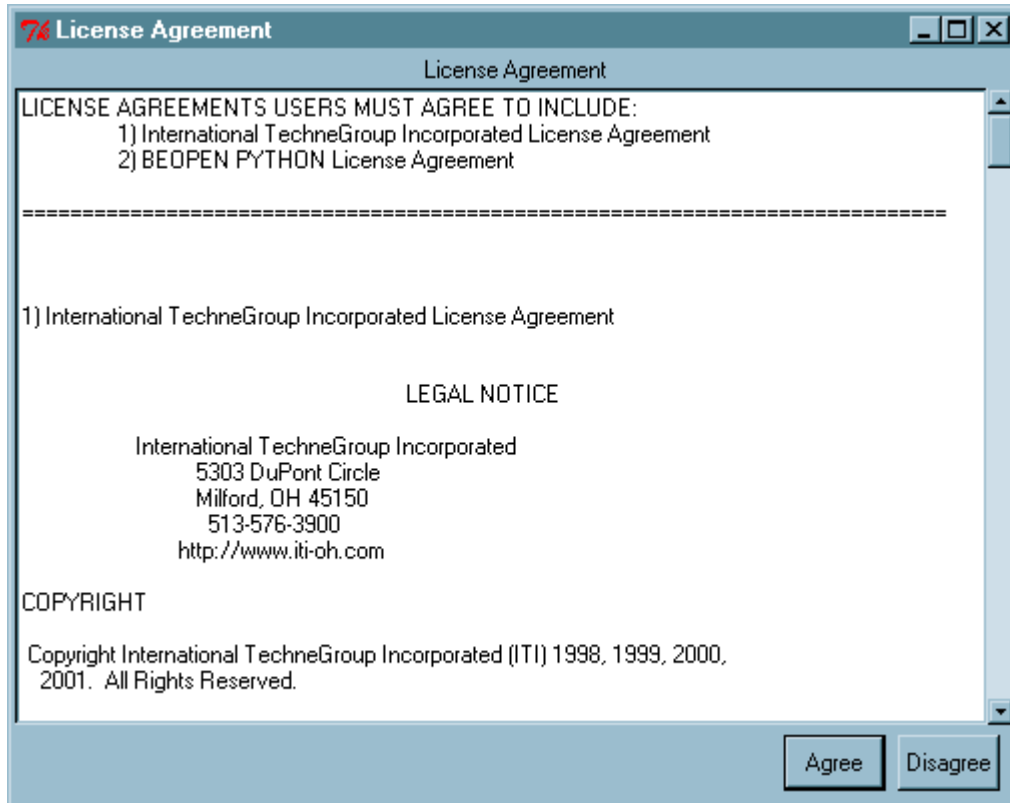
Step 4

The following are the windows (and a brief description) which you will encounter as you install the software.

- **IGESWorks V 6.0 Installation** – this is the welcome window. At this point, you should close all other programs for optimum performance of the installation. If you click Next, the installation will begin. If you click Cancel, you will be prompted to confirm that you would like to exit the software installation.



- **License Agreement** – Carefully review the License Agreement. If you click Agree, you are committing to each item the agreement covers, and the installation will continue. If you click Disagree, you will be prompted to confirm that you would like to exit the software installation. You CANNOT install the software unless you agree to the terms covered by the license agreement. (See Appendix C. License Agreement.)

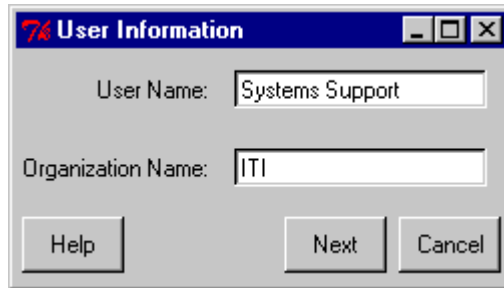


- **User Information** – Enter the following information:

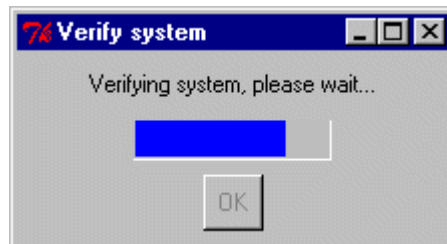
Username: Either the person doing the install, the contact person, or the primary user who will run the software. This is for the log file and as a reference if needed for technical support.

Organization Name: Organization or company that purchased the software and has committed to the license agreement.

When finished, click on Next to continue, or on Cancel, which will prompt you to confirm exiting the software installation.



- **Verify System** – This checks some basic items to ensure that the installation and IGES/Works software will run properly.



- The following is a list of items which are verified:

Username - the account you are currently logged in as.

User permissions (checks to see if installer is logged on as Root or Administrator) - set to True if you are root and False if you are logged in as anyone else. As long as you have permission to create the directories you should be able to continue with the main installation.

Supported platform - the Operating System of the current machine.

Supported operating system version - the Operating System of the current machine.

Machine name - the hostname of the current machine.

Host id - the detected machine information for the current.

Network address - the ID used for FlexLM licensing

If there is a problem found, you will be asked if you would like to view the verification log, at

which time you can choose Yes or No. If you choose Yes, you will see the log of the verification step.

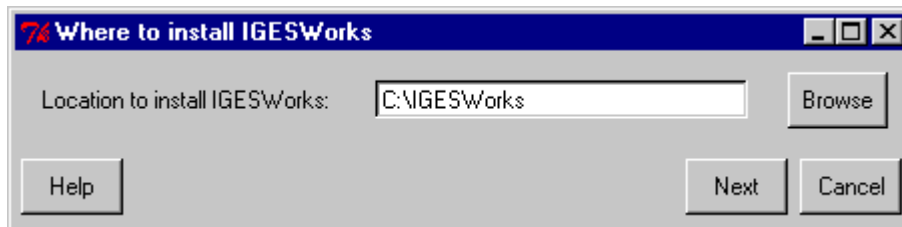
- **What to Install** – To select the components to install. You can select any of the platforms. The default is the platform the installation is running on.



General Component(s) to Install:

- **Help:** Includes all the necessary htm files for the online documentation. This is necessary for using the help menu within the IGES/Works software. It includes the resource center, the user's guide, the installation guide, license utilities/troubleshooting guide, and release notes.
- **License Utilities:** This will copy the utilities to check the license status and availability into the directory where you install IGES/Works. This is not essential, but can be useful especially for floating licenses. These utilities will be installed at the same time that you install the license server.

- Samples: This includes sample files for all available platforms.
- Product(s) to Install: You can choose which product you want to install and on which platform(s).
- Platform(s) to Install on: You can choose as many platforms as you want to install on.
- **Select Where to Install IGES/Works** – You will see the following prompt asking where to install IGES/Works. Specify the location where you want to install the IGES/Works software. You can use the browse button to make this easy.
- There will be a version directory (v 6.0) added to the Install location automatically.
- You cannot install both UNIX and NT files to the same location. Multiple platform installations to a single location are allowed on UNIX only.



- **Install IGES/Works** – You will see the message, “Installing IGES/Works. Continue?” This is the only opportunity to abort the installation copy process. If you select Yes, the actual copying process begins. If you chose No, you will be returned to the “Where to Install IGES/Works” window. Then, if you decide that you do want to install at this time and choose the same directory, you will receive a message indicating that this directory already exists. Do you want to continue? Select Yes. After the installation is finished, click Ok to continue.



A message will be displayed updating you as to the status of the installation.

- The last and final option you have is to continue with the license installation at this time. You may want to do step one (write the license file) now so that you can send it to TranscenData to receive your license

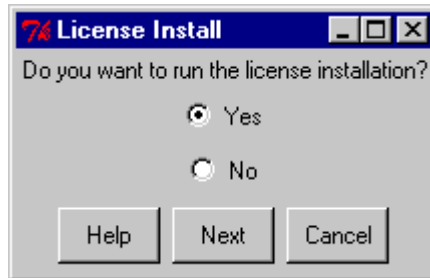


IGES/Works License Installation

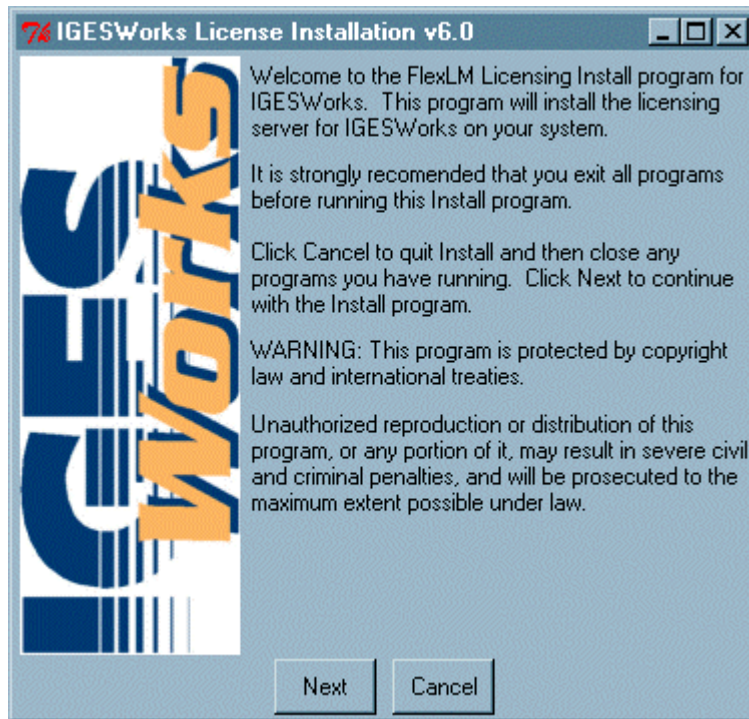
The license installation may be run any time with the following steps:

1. cd to the CDROM `cd /cdrom`
2. run the installation or setup
Unix: `./license_install.csh`
NT: `./license_setup.bat`

(For platforms without the automount capability, see Appendix B. Mount Commands).

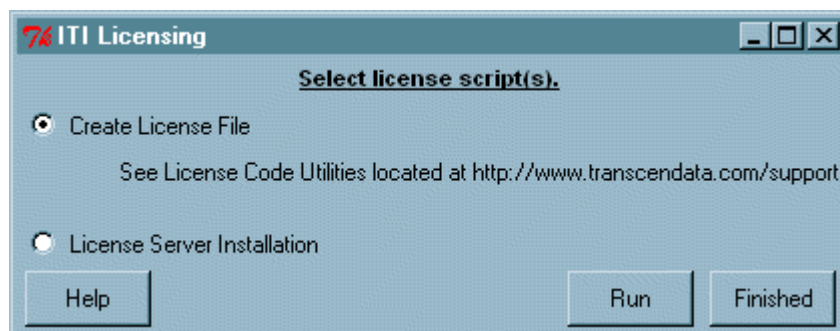


Select Yes and the next screen you'll see is the welcome screen again.



There are two parts to getting the software license activated.

- Create a License File - creates the license file. This part will create a file that you will need to send to TranscenData to receive your license keys. After receiving the license file you create with part one, TranscenData will return that license file to you with your license codes.
- License Server Installation - the second part uses the license file that you receive from TranscenData to set up the license server and activate your installation of IGES/Works. The second part is also the part that will copy the utilities and daemons to your server.



Part One: Create License File

So that TranscenData knows who is requesting the license codes and how to contact them to give them the license codes, the first window you see after selecting "Create License File" is the user information. It is very important to completely and correctly fill in all of the information. Your customer number can be found on the packaging list. The other information should be either the end users or the contact person for IGES/Works. The license file with your license codes will be returned to this person unless otherwise specified.

User information

User Information

Name: admin

Company: Company

Customer Number: 123456

E-mail Address: admin@company.com

Phone Number: 123-456-7890

Fax Number (optional):

Enter correct user information and click on the Next button.

Help Next Cancel

This is the information about your current system that the license installation was able to detect. If any of the information is incorrect, please correct it.

Server name = results of the hostname command

Server info = results of the lsmutil lsmhostid

Port number = is the port number for FlexLM to use

IGESWorks v6.0 FlexLM Server Install

FlexLM Server Name: machine

FlexLM Server Info: 00508b619033

FlexLM Port Number: 32728

Expiration Date (mm/dd/yyyy): 08 / 30 / 2001

Help Next Cancel

Note:

FlexLM Server information is 12 digit for Windows NT or 8 digits for UNIX.

If you previously supplied TranscenData with your machine information and have received from TranscenData the necessary license codes, you can enter them at this time. In most cases you do not have the licenses codes, so leave it set to 0. If you select Node Locked License, the current machine information will appear. The information you provide will be verified with your record in the database.

| Product/Feature | Number of licenses | License Code |
|--|--------------------|--------------|
| <input checked="" type="checkbox"/> IGESWorks Full | 1 | 000000000000 |
| <input type="checkbox"/> IGESWorks Lite | | |

License Type

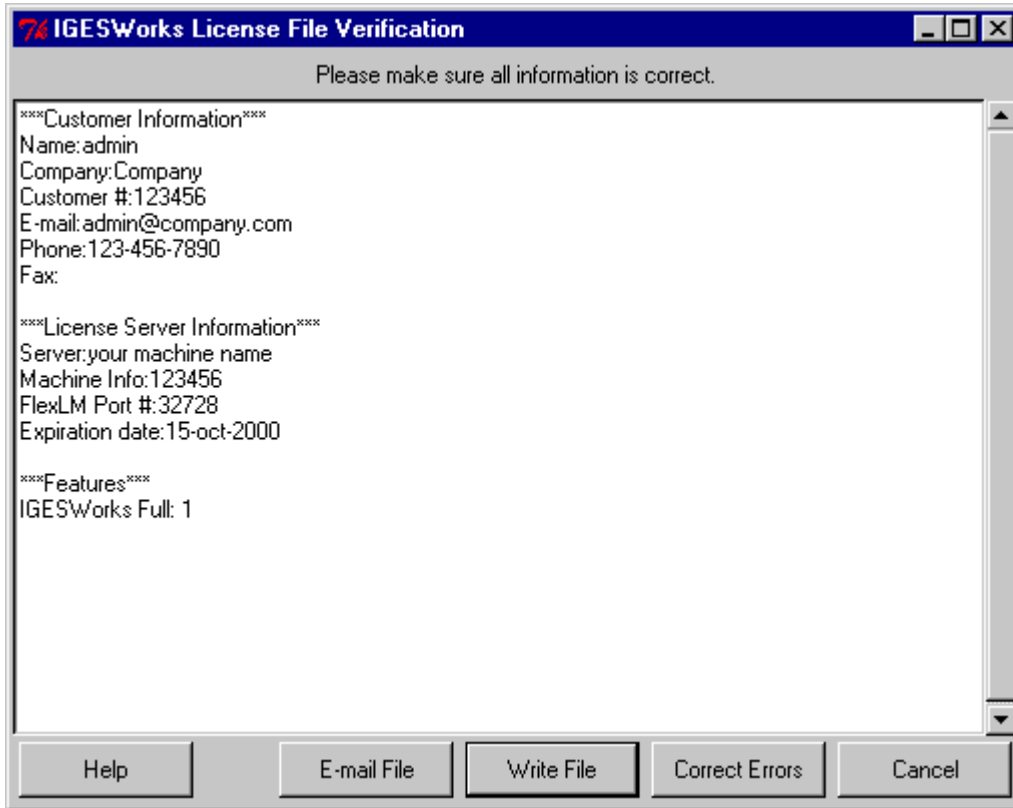
Floating License

Node Locked License

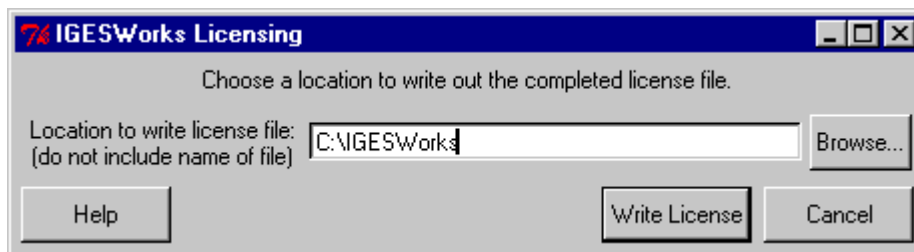
Host ID (If needed)

Help Next Cancel

Verify that the information in this window is correct. If a change is needed, pick the “Correct Errors” button. Correct the information and select Next. On some UNIX systems you will be able to use the e-mail button to automatically e-mail the information to TranscenData. Whether this works or not is dependent on your current system and environment. You are also given the option to write the file to e-mail at a later date.

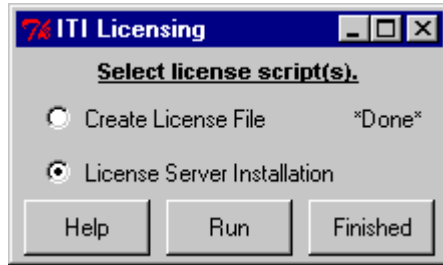


After e-mailing or attempting to e-mail, you will have the opportunity to write the license file for your own backup purposes. Specify the location or directory to write the file. The file name will be IGESWorks_License.dat.



After creating the license file, e-mail it to TranscenData and you will receive your official license codes.

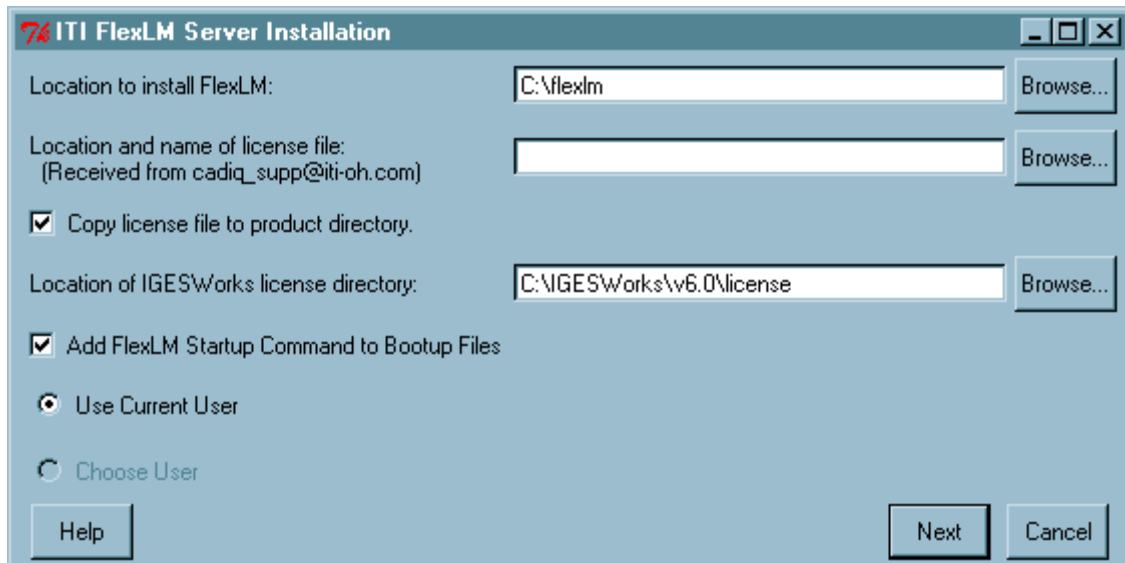
It is recommended that you run step two after you have a file with valid license codes e-mailed to you from TranscenData.



Part Two: License Server Installation

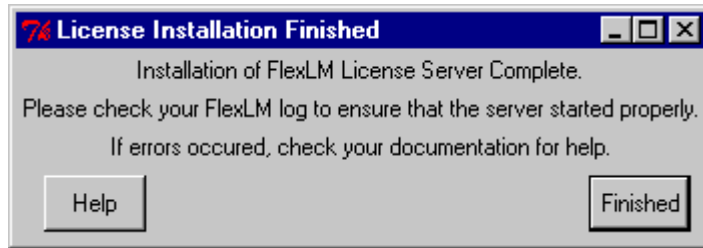
If you currently have a licensed TranscenData product that uses FLEXlm licensing and receive another TranscenData product that uses FLEXlm licensing, we suggest that you combine the license files. See Appendix D. Combining Licenses for details.

Enter the location to install the FlexLM software. Enter the location and name of your license file that you previously created or that was sent to you by TranscenData. Make sure that the license file you specify has valid license codes. If valid codes are not included, you will not be able to run the software. Enter the location of IGES/Works with the version and license directory included. Specify what user will be starting the license manager daemons. The only option for user on the NT is to "Use Current User." On UNIX, FlexLM recommends that you do not have root start the daemons, however you will need to specify a user account to start FlexLM. Make sure that the user you choose will have permission to execute the license daemons. You may need to change permissions and/or ownership of the files after the installation to be sure that they can run them if you choose a non root user.



Wait while FlexLM is installed. All necessary files and utilities will be copied. It will also create some customized starting, stopping, and status checking scripts for your specific installation. The last thing it will do is add the necessary file to the system directory to start FlexLM automatically during a boot up process.

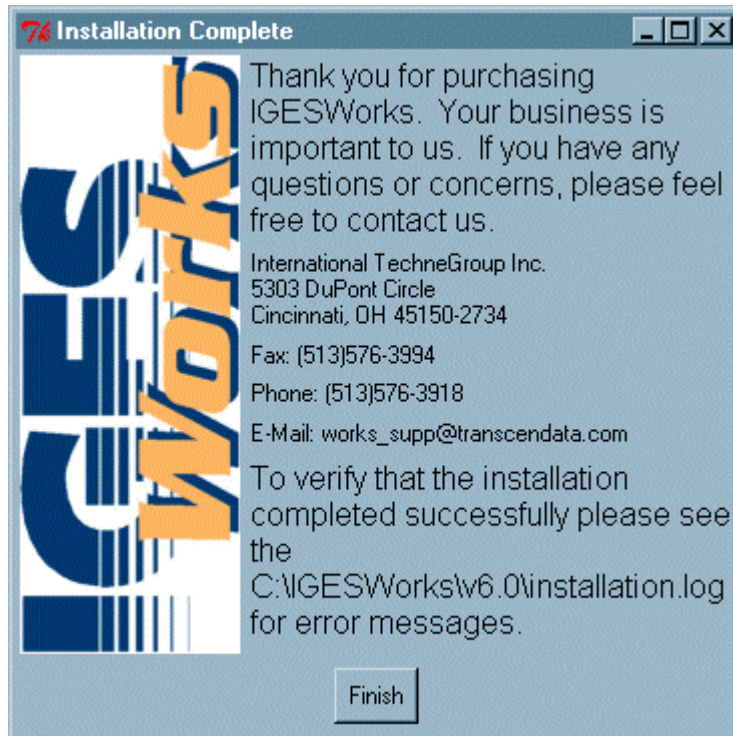
When this message is displayed, click "Finished".



You have successfully installed IGES/Works, the license file and the license server. You can now proceed to use IGES/Works.



A message will be displayed telling you that the installation is complete and thanking you for choosing IGES/Works.



Appendix A. IGES/Works X Application Resource File

If you are having font problems, you can modify the fonts by changing the X Application Resource file. There are many different methods for setting X application defaults. Some of the methods include:

1. Append this resource file to your `.Xdefaults` or `.Xdefaults-<host>` file. This file is normally located in the your home directory. The resource values will automatically be picked up when you log in.
2. Explicitly load the resource with the command
`xrdb [-merge/-load] <file>`

With this method, you will have to repeat the procedure every time you log onto the system

3. Place this resource file in the master `app-defaults` directory. This is usually located in:
`/usr/lib/X11/app-defaults`

This default directory can also be defined by the `XAPPLRESDIR` or `XUSERFILESEARCHPATH` environment variables.

For more information on setting and maintaining X resources, refer to the "X" manual page on your system. Other good sources include:

- "Resolving Xt Resource Collisions" by Al Tabayoyon, The X Resource Issue 6, O'Reilly & Associates, Inc
- "End User Customization of Xt Applications" by Jean-Michel Leon, leon@sophia.inria.fr,

Feel free to change any of the following resource settings by either

a) commenting them out (with the '!' symbol) or

b) changing the resource value. Refer to the appropriate manual page(s) for valid resource settings.

- Valid color settings can be obtained by running the 'showrgb' command
- Valid font settings can be obtained by running the 'xfontsel' command

Resource File

History

24-May-95 SWS; Version 3.0
Created

Fonts

Pulldown Menu Fonts

```
igesworks*XmCascadeButtonGadget*fontList:    -*-helvetica-bold-o-normal-*-14-*
igesworks*XmMenuShell*XmPushButtonGadget*fontList:    -*-helvetica-bold-o-
normal-*-14-*
```

Current Selection List Font

```
igesworks*Current Selection List*XmScrolledWindow.XmList.fontList:    -*-courier-
medium-r-normal-*-14-*
```

Default Font

```
igesworks*fontList:    -*-helvetica-bold-r-normal-*-14-*
```

Colors

Toggle button select color

```
igesworks*XmToggleButton.selectColor:    lightslategrey
```

Text Field and List colors

```
igesworks*XmText.foreground:    antiquewhite
igesworks*XmTextField.foreground:    antiquewhite
igesworks*XmList.foreground:    antiquewhite
igesworks*XmText.background:    grey64
igesworks*XmTextField.background:    grey64
igesworks*XmList.background:    grey64
```

Default highlight and foreground and background color

```
igesworks*background:    grey
igesworks*highlightColor:    #50140a
igesworks*foreground:    #50140a
```

Appendix B. Mount Commands

Examples showing how to Mount and use CDROM for:

| | |
|----------------|--|
| HP | <p>1. Start the following two daemons in background</p> <pre>pfs_mountd &</pre> <pre>pfsd &</pre> <p>2. Mount the HP CDROM</p> <pre>pfs_mount -v -t rrip /dev/dsk/cxtxdx /cdrom</pre> <p>where device/cxtxdx is specific to your system</p> <p>From this point, follow the normal CAD/IQ Installation Instructions.</p> <p>To unmount the HP CDROM enter:</p> <pre>pfs_umount /cdrom</pre> <p>The above procedure is for locally installed CDROMs. If you are using a remote mounted CDROM, then refer to the man pages on pfs for additional information.</p> |
| SOLARIS | <pre>/usr/etc/mount -r -t hsfs /dev/ device /cdrom</pre> <p>or</p> <pre>/usr/sbin/mount -F ufs -r /dev/dsk /device /cdrom</pre> <p>or</p> <p>Some systems will have an automatically mounted CDROM.</p> <p>To eject, go to system and click on the eject icon or use the eject CDROM command.</p> |
| SGI | <p>USE hinv to find out the correct /dev/...</p> <pre>/etc/mount -t iso9660 /dev/... /cdrom</pre> <p>or</p> <pre>/etc/mount -t iso9660 /dev/scsi/device /cdrom</pre> |

| | |
|------------|--|
| IBM | mounted on BOOT UP use smit or <code>/usr/sbin/mount -v cdrfs -r /dev/cd0 /cdrom</code> |
|------------|--|

To un-mount to get the CD back, use the command "umount" followed by the location you mounted it to (/cdrom). Or use the eject command.

Appendix C. License Agreement

LEGAL NOTICE
International TechneGroup Incorporated
5303 DuPont Circle
Milford, OH 45150
513-576-3900
<http://www.iti-oh.com>

Copyright

Copyright International TechneGroup Incorporated (ITI) 1998, 1999, 2000, 2001.
All Rights Reserved.

License Disclaimer

This is proprietary ITI software. Nothing on this ITI installation media shall be construed as conferring any license under any of the ITI or any third party's intellectual property rights, whether by estoppel, implication, or otherwise.

Restricted Use

The directories, libraries and other files in the runtime directory may only be used with the application with which they were installed.

Any other use is strictly prohibited.

You must contact International TechneGroup Incorporated before using this software for any other purpose.

Content and Liability Disclaimer

ITI shall not be responsible for any errors or omissions contained on this installation media or in the software, and reserves the right to make changes without notice. Accordingly, all ITI and any third party information is provided "AS IS".

ITI DISCLAIMS ALL WARRANTIES WITH REGARD TO THE INFORMATION (INCLUDING THE SOFTWARE) PROVIDED, INCLUDING THE IMPLIED WARRANTIES OF MERCHANTABILITY AND FITNESS FOR A PARTICULAR PURPOSE, AND NON-INFRINGEMENT.

In no event shall ITI be liable for any damages whatsoever, and in particular, ITI shall not be liable for special, indirect, consequential, or incidental damages, or damages for lost profits, loss of revenue, or loss of use, arising out of or related to any ITI product or service or the information contained in it, whether such damages arise in contract, negligence, tort, under statute, in equity, at law or otherwise.

Feedback Information

Any information provided to ITI in connection with any ITI software shall be provided by the submitter and received by ITI on a non-confidential basis. ITI shall be free to use such information on an unrestricted basis.

Trademarks

A partial list of the ITI Trademarks appears below. ITI prohibits the use of the ITI logo as a "hot" link to any ITI Web Site unless the establishment of such a link is approved by International TechneGroup Incorporated.

IGES/Works, International TechneGroup Incorporated

CADScript, International TechneGroup Incorporated
CADServer, International TechneGroup Incorporated
PDI/Core, International TechneGroup Incorporated
Sys/IF, International TechneGroup Incorporated
ITI, International TechneGroup Incorporated

All other brand names, product names or trademarks belong to their respective holders.

SOFTWARE LICENSE AGREEMENT

YOUR USE OF THE INTERNATIONAL TECHNEGROUP INCORPORATED (“ITI”) PRODUCTS CONTAINED ON THIS CD ROM (OR CONTAINED IN ANY OTHER MEDIA OR TRANSMITTED BY ANY FORM OF ELECTRONIC DOWNLOADING OR THROUGH ANY OTHER MEANS BY WHICH YOU OBTAIN THIS SOFTWARE) IS SUBJECT TO THE FOLLOWING TERMS AND CONDITIONS. THIS IS A LEGAL AGREEMENT BETWEEN YOU AND ITI.

YOUR LICENSE HEREUNDER IS VALID ONLY IF YOU HAVE OBTAINED THE PROGRAM(S) EITHER DIRECTLY FROM ITI OR FROM ONE OF ITS AUTHORIZED RESELLERS.

IF LICENSEE HAS SIGNED AN ITI SOFTWARE LICENSE AGREEMENT OR AN ITI SERVICES AGREEMENT, THEN THESE PROGRAM(S) ARE PROVIDED UNDER THE APPLICABLE SIGNED AGREEMENT. THE LICENSEE’S ACCEPTANCE OF THIS SOFTWARE LICENSE AGREEMENT SHALL NOT BE DEEMED TO SUPERSEDE THE TERMS AND CONDITIONS OF THE APPLICABLE SIGNED AGREEMENT.

This is a Software License Agreement (the “Agreement”) between International TechneGroup Incorporated, an Ohio corporation with its principal offices at 5303 DuPont Circle, Milford, Ohio 45150, United States of America, (“ITI”) and you, LICENSEE, the purchaser of the licensed SOFTWARE contained on the media, or electronically downloaded, accompanying this Software License Agreement. All software or other products or services provided by ITI to Licensee shall be deemed to be provided pursuant to, and shall be governed by the terms and conditions of this Agreement.

This Agreement becomes effective on the date Licensee Accepts this Software License Agreement.

1. Definitions As used in this Agreement:

1.1. “Program(s)” means (i) any proprietary software, firmware, operating system, utility software or other software programs in object code form licensed by ITI; (ii) software programs contained on the media, or electronically downloaded, accompanying this Software License Agreement, or in any other way obtained, directly or indirectly, from ITI; and (iii) any updates, revisions, bug fixes, modifications, translation and enhancements thereof.

1.2. “Documentation” means the user manuals, handbooks and other written or electronic materials, regardless of how recorded, relating to the Program(s) and provided directly or indirectly by ITI to Licensee.

1.3. “User” means an individual who is an employee or contractor of Licensee who is licensed hereunder to use the Program, and who has been assigned an individually unique User ID for accessing the Program.

1.4 Platform means the combination of a specific Operating System and its associated Hardware environment on which a Program may be utilized.

1.5. “CPU” shall mean a specific computer which can be uniquely identified from all other computer(s) at the Licensee’s Site(s).

1.6. "Site" means the single location at which the Programs are first installed. A Site location shall be defined as a single building, or any group of building within one mile of each other which are all under the ownership or control of Licensee if such buildings are connected by a local area network over which the Programs may be accessed. If Licensee in the future wishes to use the Programs at a different Site, then Licensee shall request from ITI permission to do so, and ITI shall not unreasonably withhold or delay its consent. However, ITI may, in its sole discretion, withhold its consent to Licensee's use of the Programs in a different country than that for which the Programs were initially licensed for use.

1.7. "Maintenance" means the set of services which Licensee may separately purchase from ITI or its authorized Reseller, pursuant to the applicable published Maintenance Description including maintenance, training, consulting and programming services.

1.8. "Product" means one or more of ITI's Programs, Documentation or Maintenance provided to Licensee hereunder. Products shall be those provided by ITI or its authorized Reseller along with this Software License Agreement or identified in any Licensee purchase order which references this Agreement and which is accepted by ITI, or which otherwise is provided to Licensee pursuant to this Agreement.

2. Software License

2.1. ITI grants and Licensee accepts a non-exclusive, non-transferable paid-up license to the Programs together with associated Documentation, without the right to sublicense, to use the programs solely on the Platform and at the Site for Licensee's internal business purposes, and to use the Documentation in accord with the terms contained therein only as necessary for use of the Programs. The Programs may be used only for Licensee's internal business purposes and may not be used for timesharing, generation of consulting, service bureau or other similar revenues to Licensee. No source code is provided under this Agreement. Licensee may make one copy of each Program and Documentation solely for archival and emergency restart purposes. Licensee may make one (1) complete paper copy of Documentation solely for its internal use pursuant to this Agreement.

2.2. A Node Locked License authorizes Licensee to install software on a single CPU, and have only one User execute the software concurrently. Licensee may de-install and re-install software on a different CPU according to ITI's published license transfer instructions. Licensee may execute software remotely through a local area network application at the same Site. However, Licensee is still limited to one concurrent User.

2.3 A Floating License authorizes Licensee to install software on multiple Platform and CPU types on a network and have up to as many User(s) executing the software concurrently as was designated at time of purchase. Licensee may de-install and re-install software on a different CPU according to ITI's published license transfer instructions. Licensee may execute software remotely through a local area network application at the same Site. However, Licensee is still limited to the number of concurrent Users designated at time of purchase.

2.4. No title to or ownership of any Program or Documentation is transferred to Licensee. All Programs, Documentation and copies thereof, and copyright, trade secret, patent, trademark and other intellectual or industrial property rights therein shall remain the property of ITI or their respective third party owners.

2.5. Licensee shall preserve, protect, and not alter or remove any copyright, patent, maskwork, trade secret, trademark, proprietary or other legal notice contained on or in Products. Licensee shall reproduce all such notices on or in all complete and partial copies of the Programs and Documentation.

2.6. Licensee acknowledges that Programs (including Documentation in Program form), and Documentation comprise and contain valuable proprietary information and trade secrets of ITI, and Licensee agrees to undertake the following steps: (i) to hold Programs and Documentation in confidence; (ii) to safeguard Programs and Documentation against unauthorized replication, disclosure, copying, display, loan, publication, transfer of possession (whether by sale, exchange, gift, inadvertence, remote access, operation of law or otherwise) or other dissemination or

distribution of any Program or Documentation, in whole or in part, to any third party without the prior written consent of ITI; (iii) not to cause or permit decompilation, disassembly, or examination for the purpose of reverse engineering; (iv) not to use said proprietary information or trade secrets for any purpose not authorized by this Agreement; and (v) to report promptly to ITI any actual or suspected violation of this subsection and to take such further steps as requested to prevent or remedy any such violation. The provisions of this subsection shall survive any expiration or termination of this Agreement.

3. Fees, Charges and Payment

3.1. Licensee shall, if it has not already done so, pay to ITI or its authorized Reseller from whom the Product(s) were obtained, within ten (10) days of installing the Program(s) on the Platform, the applicable Program License Fees.

3.2. Prices, fees and charges exclude federal, state, local, municipal or other excise, sales, use and transfer taxes, assessments duties or charges imposed by any governmental authority in connection with this Agreement or the use of the Licensed Programs. All such charges shall be promptly paid by Licensee.

4. Maintenance

Maintenance is available separately from ITI and/or its authorized Reseller. If Maintenance is separately purchased from ITI by Licensee, ITI will provide Maintenance for the applicable purchased Maintenance Term in accordance with the terms and conditions of this Agreement and ITI's applicable published Maintenance Description.

5. Intellectual Property Indemnification

5.1. ITI will defend at its expense any action brought against Licensee based on a claim that a Program infringes any United States patent, copyright, trade secret right or trademark,

and ITI will pay all costs and damages finally awarded against Licensee in any such claim, provided however, that: (i) Licensee notifies ITI promptly in writing of any such claim;

(ii) ITI shall have sole control of the defense of any such action and all negotiations for its settlement or compromise; (iii) Licensee fully cooperates with ITI in such defense, settlement or compromise.

If any Program becomes, or in ITI's opinion is likely to become, the subject of a claim of such infringement: (i) ITI, at its option and expense, will procure for Licensee the right to continue using the Program, or replace or modify the Program so that it becomes non-infringing, provided its functionality remains essentially unchanged; or, (ii) ITI, at its option will accept return of the Program and grant Licensee a refund equal to the license fees paid for the Program.

5.2. ITI shall have no liability under the preceding subsection 5.1 to the extent that any such claim of infringement is based upon (i) use of any Program in combination with equipment or software not supplied or approved in writing by ITI where such Program would not itself be infringing, or (ii) modifications of any Program by anyone other than ITI.

5.3. THE FOREGOING PARAGRAPHS 5.1 AND 5.2 STATE THE ENTIRE LIABILITY OF ITI WITH RESPECT TO INFRINGEMENT OF PATENTS, COPYRIGHTS, TRADE SECRETS, TRADEMARKS OR OTHER INTELLECTUAL OR PROPRIETARY RIGHTS.

6. Warranty and Limitation of Liability

- 6.1. ITI warrants solely to Licensee that for thirty (30) days after Installation, the warranted Programs will perform substantially in accordance with their then-current published functional specifications. ITI does not warrant that use of Programs will be uninterrupted or error-free.
- 6.2. Problems with Programs must be reproduced on the Platform for which they are licensed to be eligible for warranty service hereunder.
- 6.3. If ITI receives written notice within the warranty period that warranted Programs do not perform substantially in accordance with their then-current published functional specifications, ITI shall, at its option, either repair or replace such Programs, or accept their return and refund any payments received therefore, which shall be Licensee's sole remedy for any non-compliance. Repair services and maintenance which are not covered by warranty shall be paid for at ITI's then current rates.
- 6.4. This warranty is a limited warranty. Certain third party Programs which shall be identified as such, may be warranted directly and exclusively to Licensee by the third party.
- 6.5. This warranty does not apply to any software designated as "Beta", "Alpha" or in a "Pre-release" stage. Software designated as such is considered "As-is".
- 6.6. This warranty does not apply, and Maintenance will not be provided with respect to any condition resulting, in whole or in part from: (i) negligence of Licensee, abuse, accident or natural disaster; (ii) any attempt to alter, modify, merge or repair Programs by any party other than ITI; (iii) improper or unauthorized use, including use outside of specified environmental conditions, or in combination with equipment or software not supplied or authorized in writing by ITI as part of this Agreement; and (iv) external causes, including fluctuation of electrical power, inadequate cooling, or other unusual electrical or physical stress.
- 6.7. DISCLAIMER OF WARRANTY; THE ABOVE WARRANTIES ARE EXCLUSIVE WARRANTIES, AND NO OTHER WARRANTY, WHETHER EXPRESS OR IMPLIED, WRITTEN OR ORAL, SHALL APPLY TO THE SUBJECT OF THIS AGREEMENT. ITI SPECIFICALLY DISCLAIMS ANY IMPLIED WARRANTY OF MERCHANTABILITY OR FITNESS FOR A PARTICULAR PURPOSE.
- 6.8. ITI'S MAXIMUM LIABILITY ARISING OUT OF THE LICENSING, USE OR PERFORMANCE OF PRODUCTS, WHETHER BASED UPON WARRANTY, CONTRACT, TORT OR OTHER LEGAL THEORY, SHALL NOT IN ANY EVENT EXCEED THE ACTUAL PAYMENTS RECEIVED BY ITI OR ITS AUTHORIZED RESELLER THEREFORE. IN NO EVENT SHALL ITI OR ITS AUTHORIZED RESELLER BE LIABLE HEREUNDER FOR SPECIAL, INCIDENTAL OR CONSEQUENTIAL DAMAGES, INCLUDING, BUT NOT LIMITED TO, LOSS OF PROFITS, DATA OR USE.
- 6.9. Licensee is solely responsible for safeguarding by all appropriate means its data used in connection with the Programs.

7. Licensee Indemnification

Licensee shall indemnify, defend and hold harmless ITI from and against any claim, damage, loss or expense (including reasonable attorneys' fees) arising from: (i) infringement or alleged infringement of any patent, copyright or trade secret of any Product by any person or party to whom Licensee has disclosed such Product; (ii) Licensee's material breach of any of its obligations under this Agreement; (iii) Licensee's misuse of Products; or (iv) any other claim, damage, loss or expense arising out of this Agreement and caused by the fault of Licensee.

8. Term and Termination

8.1 The license granted under this Agreement shall commence upon the Installation of the Program and/or Documentation on the Platform by Licensee and shall remain in effect as long as Licensee complies with its obligations hereunder but shall terminate immediately in the event of

Licensee's breach or non-observance of any obligation hereunder. Section 2.2, 2.3, 2.4, 5, 6 and 7 hereof shall survive any expiration or termination of this Agreement.

8.2 Upon expiration or termination of any license or sublicense granted hereunder to Licensee, Licensee shall return all copies of Program and documentation in its possession or under its control to ITI, or destroy all such copies and certify their destruction in writing to ITI.

9. Government Contracts

To the extent any Product or technical data is licensed or acquired on behalf of the United States Government, the parties understand that each such Product or technical data: (i) was developed at private expense, and no part was developed with government funds; (ii) is a trade secret for all purposes of the Freedom of Information Act and 18 U.S.C. 1905; (iii) if a Program, is "commercial computer software" subject to limited utilization as provided in the Agreement; and (iv) in all respects is proprietary data belonging solely to International TechneGroup Incorporated and/or its licensors. Each Program is provided only with Restricted Rights as provided in Federal Acquisition Regulation (FAR) §52.227-19, or if with the Department of Defense, Defense FAR Supplement (DFARS) §252.227-7015(c)(2). Technical data is provided only for the specific purposes described in this Agreement, and with Limited Rights as provided in FAR §52.227.404 and DFARS §252.227.471.

10. General

10.1. *Compliance with Laws.* Licensee will carry out the transactions contemplated by this Agreement and will otherwise deal with the Products in conformity with all applicable laws, rules and regulations of all governmental authorities, and will obtain all applicable permits and licenses, including any necessary under the export laws of the United States, required in connection with the use of any Product. The export of any Product, including its use by remote access in any foreign country, may be subject to regulation or restriction under the Export Administration Act and, therefore, prior to exportation, Licensee shall obtain any licenses which may be necessary, supplying ITI with copies thereof, under such Act and the regulations thereunder.

10.2. *Assignment.* Licensee may not delegate any duties nor assign any rights or claims under this Agreement without ITI's prior written consent.

10.3. *Governing Law.* This Agreement shall be governed by the laws of the State of Ohio, United States of America, without reference to its Conflict of Laws provisions, or the United Nations Convention on Contracts for the International Sale of Goods. Any legal action instituted in connection with this Agreement shall be under the exclusive jurisdiction of the state or federal courts of Ohio.

10.4. *Force Majeure.* In the event that either party is prevented from performing, or is unable to perform, any of its obligations under this Agreement due to any cause beyond the reasonable control of the party invoking this provision, and if such party shall have used its best efforts to avoid such occurrence and minimize its duration and has given prompt written notice to the other party, then the affected party's performance shall be excused and the time for performance shall be extended for the period of delay or inability to perform due to such occurrence.

10.5. *Severability.* In the event that any provision of this Agreement is held by a court of competent jurisdiction to be unenforceable, validity of the remaining provisions shall not be affected.

10.6. *Notices.* Any written notice or communication required or permitted under this Agreement shall be effective upon personal delivery or three (3) days after being sent via a method which is likely to result in delivery within such time to the party to whom the notice is sent.

10.7. *Entire Agreement.* This Agreement and published ITI documents referred to herein constitute the complete and exclusive statement of the contract between ITI and Licensee with

respect to the matters referred to herein. No waiver, consent, modification, amendment or change of the terms of this Agreement shall be binding unless in writing and signed by ITI and Licensee.

Appendix D. Combining Licenses

Unix

If you are on UNIX, follow these steps to combine licenses.

1. Stop the existing license file that is currently running.
 - Change directory to the existing license server directory.
 - Run the "stop_license.csh" or "lmutil lmdown -c /<installation directory>/cadfix3xx/lic/cadfix.dat" file.
 - Run the "status_license.csh" or "lmutil lmstat -c /<installation directory>/cadfix3xx/lic/cadfix.dat" file to make sure that the license is not running.
2. Now that your server license has been stopped, copy the FEATURE lines from the new license file supplied by ITI. Paste them into the existing ITI license file and save the file.
 - Perform a "vi" on the new license file that ITI has sent to you.
 - Copy all the "FEATURE" lines from that file that are going to be add to the existing file. (Select edit, copy)
 - Close "vi" without saving the changes (:q!).
 - Open the existing License File using "vi" and paste the new FEATURE lines after the existing FEATURE lines in the existing License File. (Select edit, paste).
 - Save the file (:wq).
3. Copy the licenses into the proper locations and rename the license files using the proper naming conventions defined below.

| | |
|-----------|--|
| FlexLM | Add all feature lines to existing ".dat" file in the server. (DO NOT change the existing name of the file) |
| CADFix | /<installation directory>/cadfix3xx/lic/cadfix.dat |
| CADIQ | /<installation directory>/cadiq/v3.x/license/CadIQ_License.dat |
| IGESWorks | /<installation directory>/igesworks/v6.0/license/IGESWorks_License.dat |

4. When the license files are in the proper locations and are named properly, start the licenses again to activate the license files for each product.
 - Change directory to the existing license file directory.
 - Run the "start_license.csh" or "Imgrd -c /<installation directory>/cadfix3xx/lic/cadfix.dat -l logfile.txt" file.
 - Run the "status_license.csh" or "Imstat -c /<installation directory>/cadfix3xx/lic/cadfix.dat" file to make sure that the license is running.
5. Be sure that copies of these new COMBINED license files are also in the proper locations on each client machine.

NT

If you are on NT, follow these steps to combine licenses.

1. Stop the existing license file that is currently running.
 - Open FlexLM license utility found in the ITI product license directory (Imtools.exe).
 - Under the Service/License File, select "Configuration using Services".
 - Select the Start/Stop/Reread tab and highlight the "ITI FlexLM License" that is running for the existing product.
 - Select the "Stop Server" button.
2. Now that your server license has been stopped, copy the FEATURE lines from the new license file supplied by ITI and paste them into the existing ITI license file and save the file.
 - Open an NT explorer window
 - Double click on the product ".dat" file to open the NEW license file that was received.
 - Copy only the "FEATURE" lines out of the new license file.
 - Open the existing License File and paste the new FEATURE lines after the existing FEATURE lines in the existing License File.
 - Save the file.

3. Place a copy of the licenses into the proper locations and rename the license files in these locations with the proper naming conventions defined below.

| | |
|-----------|--|
| FlexLM | Add all feature lines to existing ".dat" file in the server. (DO NOT change the existing name of the file) |
| CADFix | c:/<installation directory>/CADfix 3.x/lic/cadfix.dat |
| CADIQ | c:/<installation directory>/CadIQ/v3.x/license/CadIQ_License.dat |
| IGESWorks | c:/<installation directory>/IGESWorks/v6.0/license/IGESWorks_License.dat |

4. When the license files are in the proper locations and are named properly, start the licenses again to activate the license files for each product.
 - FlexLM license utility found in the ITI product license directory (lmtools.exe).
 - Under the Service/License File select "Configuration using Services".
 - Select the Start/Stop/Reread tab and highlight the "ITI FlexLM License" that you want to start.
 - Select the "Start Server" button.
5. Be sure that copies of these new COMBINED license files are also in the proper locations on each client machine.